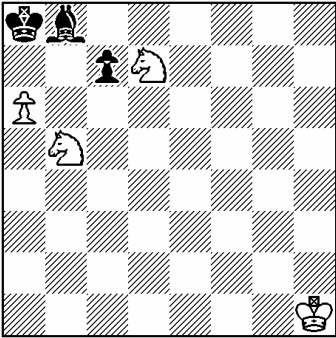


UNDER 14 AND UNDER 12 - SOLUTIONS



1) White to play and mate in 2 moves (9 points)

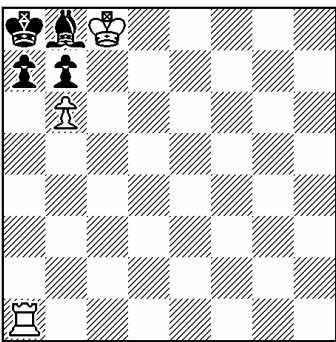
Anonymous

All Black moves are provided with a mate, so a waiting move will do.

Try: 1.Kg1? but Ba7+!

Try: 1.Kh2 but c6+ or c5+!

Solution: 1.Kg2!



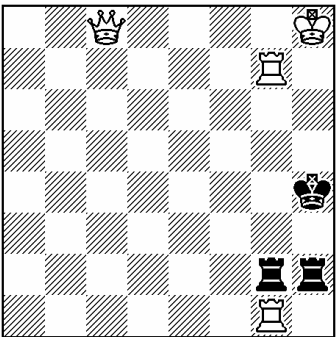
2) White to play and mate in 2 moves (9 points)

P Morphy, *New York Ledger*, 1856

1.Ra6! waiting

if 1... bxa6 2.b7

if 1... B any 2.Rxa7.



3) White to play and mate in 2 moves (10 points)

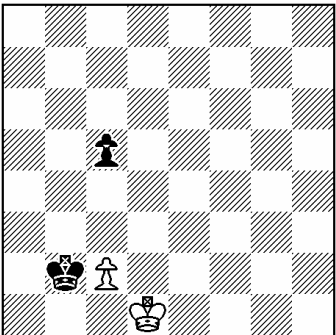
E M Hassberg, *New York Post*, 1945

1.Qc2! threat 2.Qh7

if 1... Kh3 or Kh5 2.Qh7

if 1... Rxc2 2.Rh7

if 1... Rg5, Rg6 or Rxg7 2.Qxh2



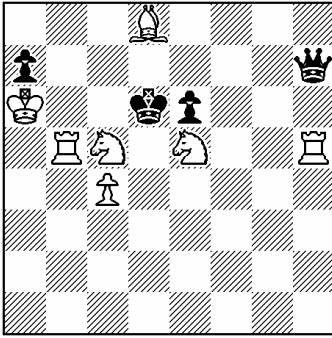
4) White to play and draw (10 points)

L'Hermet-Dchonstein, 1887

1.c4 Kc3 2.Kc1 Kxc4 3.Kc2 and White has the opposition.

For example:

3... Kd4 4.Kd2 c4 5.Kc2 c3 6.Kc1 Kd3 7.Kd1 c2+ 8.Kc1



5) White to play and mate in 2 moves (11 points)

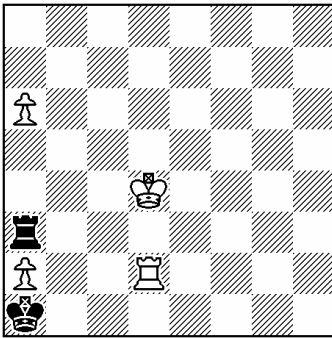
G Foster, *British Chess Magazine*, 1987

All Black moves are provided with a mate, because if the queen moves then White mates by Nb7 or Ne4. Therefore a waiting move will do.

Try: 1.Ra5? but 1..... Qb1!

Try: 1.Rg5? but 1..... Qh1!

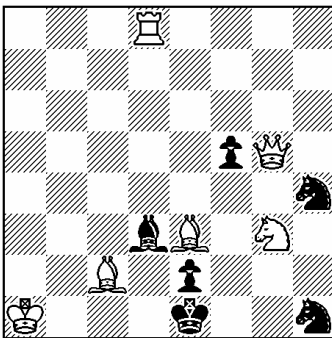
Solution: 1.Rh4! and now if 1..... Kxe5 then 2.Nb7.



6) White to play and win (12 points)

L Prokes, *Sach*, 1941

1.Kc4 Rxa6 2.a4! Rxa4+ 3.Kb3



7) White to play and mate in 2 moves (12 points)

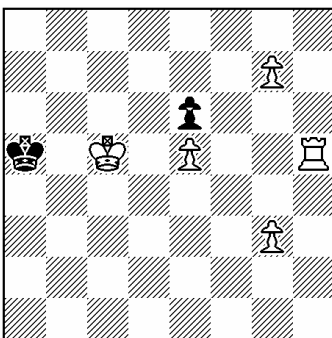
O Stocchi, *Szachy*, 1950

A move of the Bishop on e3 along the long diagonal will threaten mate by Qc1.

Try: 1.Bc5? Nf2 2.Bb4, but 1.... f4!

Try: 1.Bd4? Nf2 2.Bc3, but 1.... Bxc2!

Solution: 1.Bb6! Nf2 2.Ba5



8) White to play and mate in 3 moves (13 points)

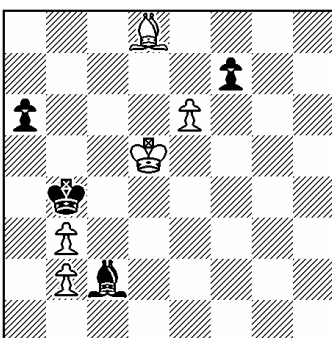
J Grande, *Problem*, 1964

1.Rf5!

if 1.... Ka4 then 2.Rf3 Ka5 3.Ra3

if 1.... Ka6 then 2.Rf7 Ka5 3.Ra7

if 1.... exf5 then 2.g8=Q Ka4/Ka6 2.Qa2/Qa8



9) White to play and win (14 points)

L Prokes, *Schweizerische Arbeiter Schachzeitung*, 1948

1.Ba5+! Kxa5 2.e7 Bxb3+ 3.Kc5 Ba4 4.b4